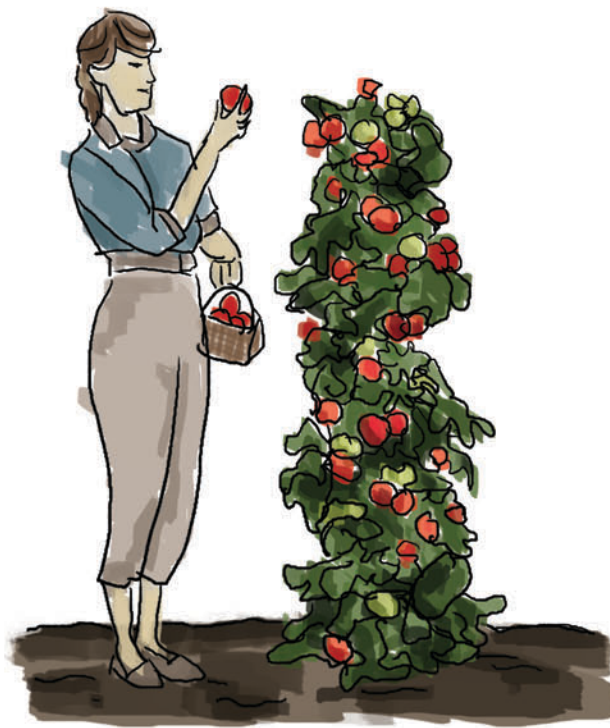


# BIODEGRADABLE FERTILIZER WIPES

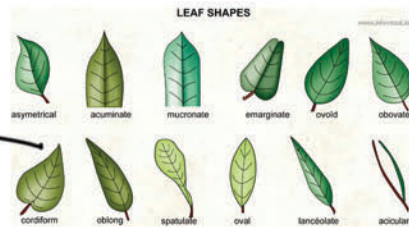


# BIODEGRADABLE FERTILIZER WIPES



SEEDS

POSSIBLE TYPES OF SEEDS



LEAF SHAPES



GARDENING



BE ABLE TO TRANSPLANT

PACKAGE IDEAS

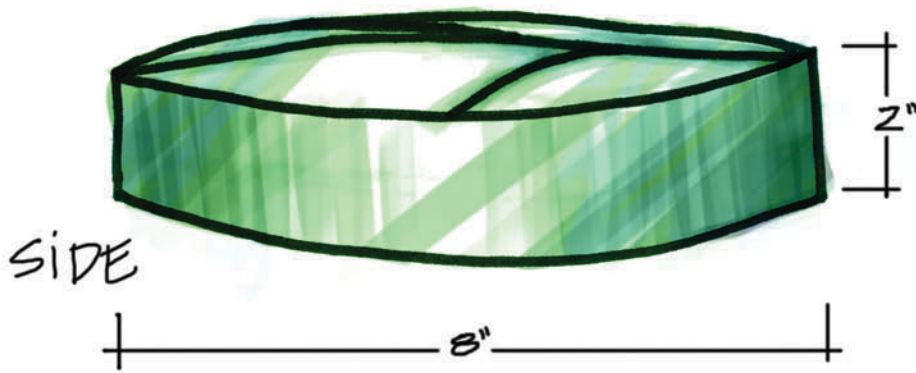


IMPREGNATED SEEDS

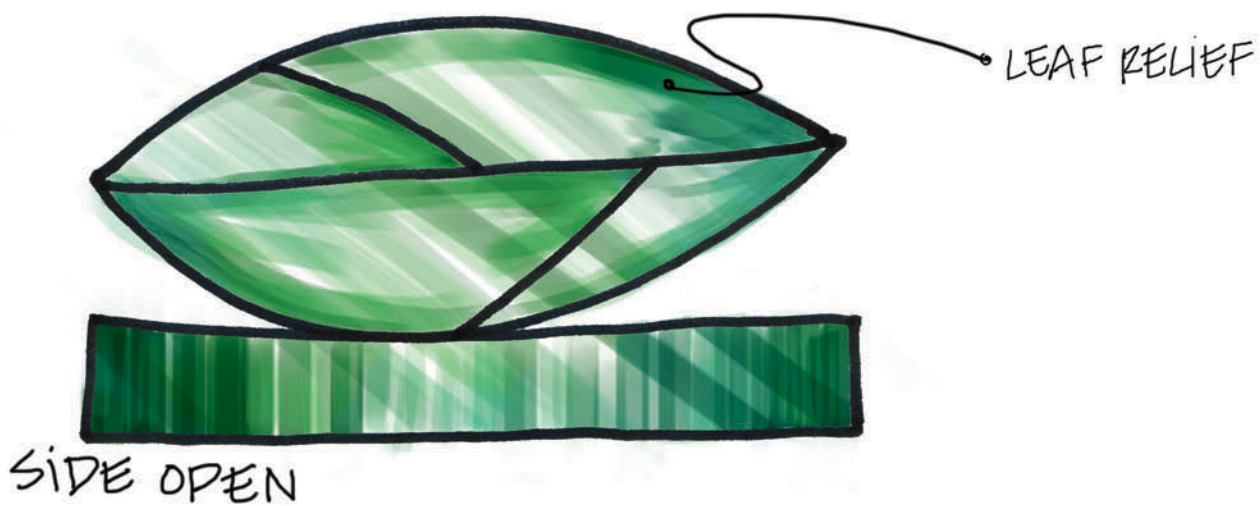
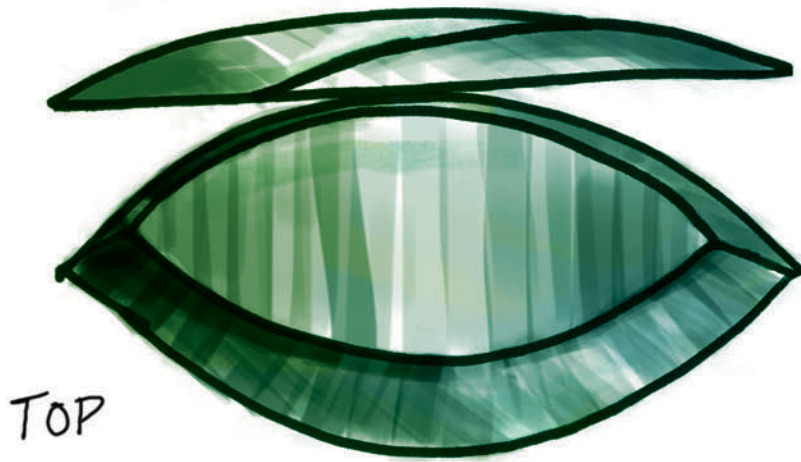


growing the paper

# BIODEGRADABLE FERTILIZER WIPES



- WIPES IN SHAPE OF CONTAINER
- REFILLABLE
- WIPES IMPREGNATED WITH SEEDS



# BIODEGRADABLE FERTILIZER WIPES



PEPPER

- CONTAINER IS 3-D OBJECT OF THE TYPE OF SEED IT CONTAINS
- IMPREGNATED SEEDS ON WIPES CORRESPONDS WITH CONTAINER
- WIPES COULD BE HERBS, VEGETABLES, OR FLOWERS

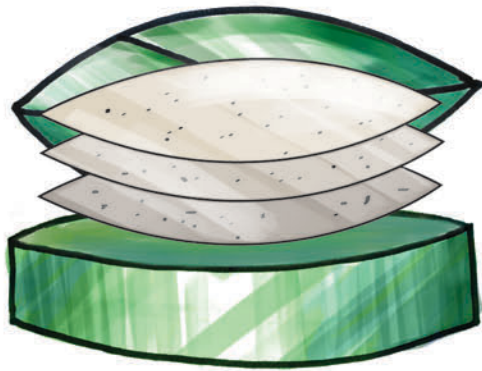
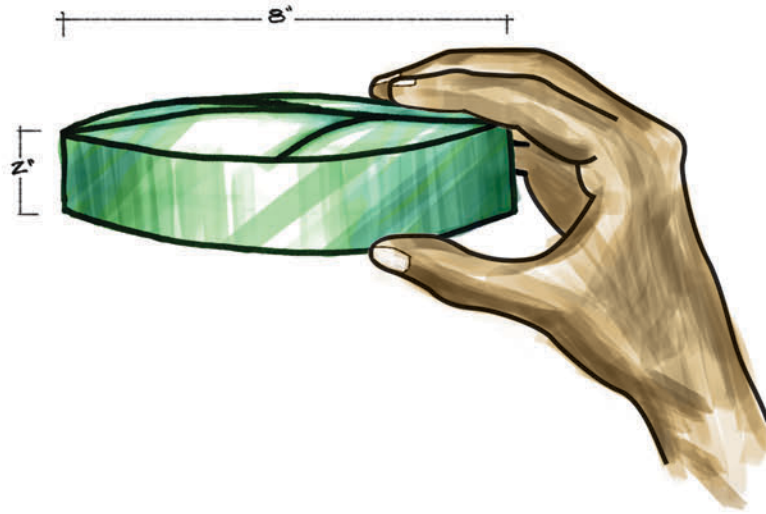


POTATO



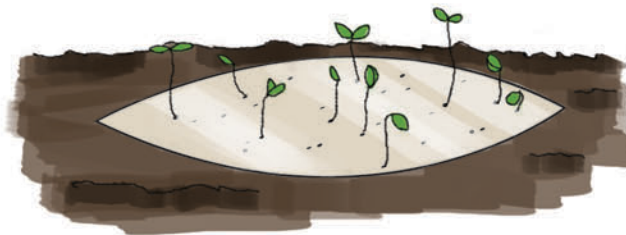
PUMPKIN

# BIODEGRADABLE FERTILIZER WIPES

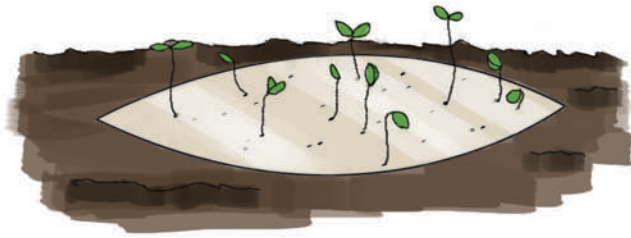


- WIPES ARE LAYERED IN CONTAINER

- PLACE WIPE DIRECTLY IN GROUND AND WATER



# BIODEGRADABLE FERTILIZER WIPES



◦ PLACE WIPE IN GROUND

◦ WATER REGULARLY  
◦ LEAVE WIPE IN GROUND



◦ FULL GROWN PLANT WITH VEGETABLES